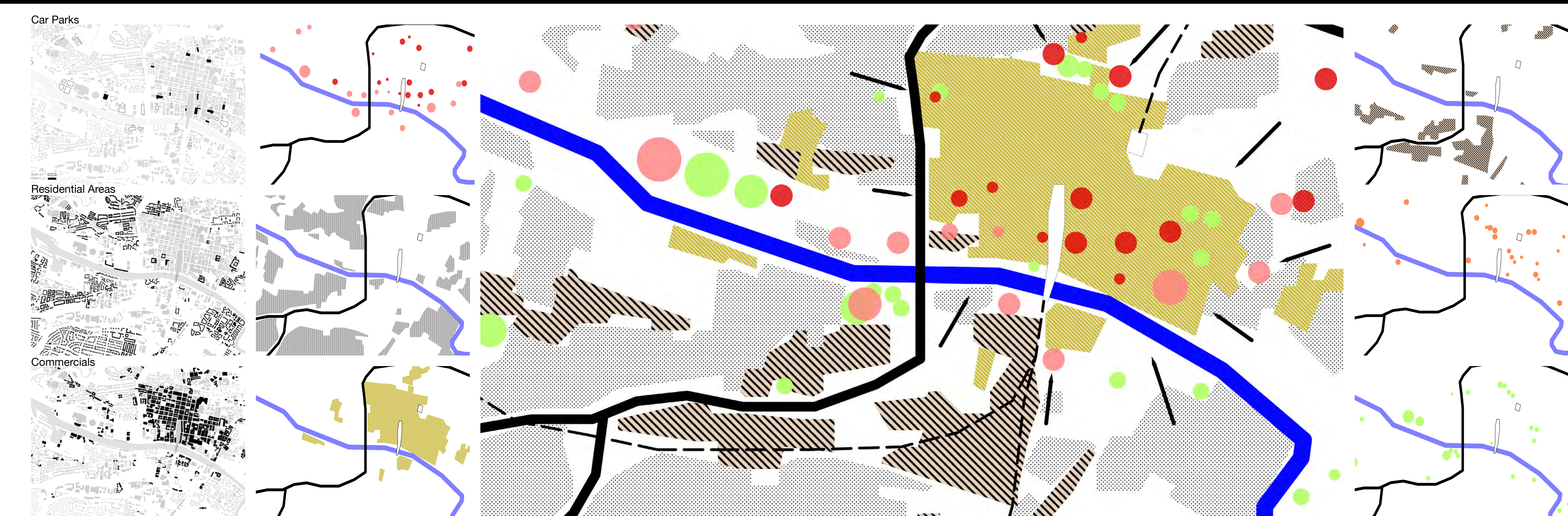


USE MAP

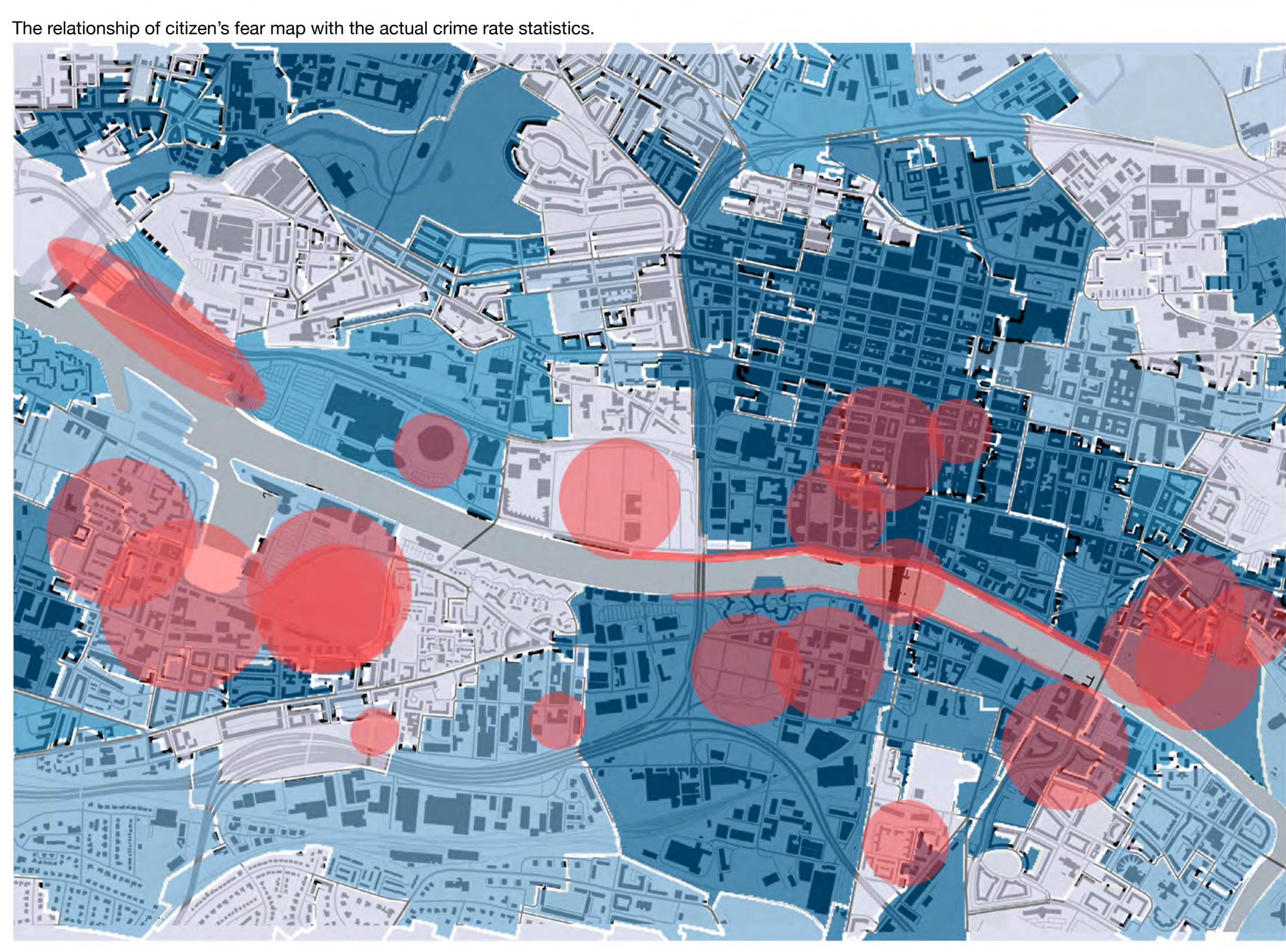


How is the River Clyde used?

Glasgow is a city where most of the functions/uses are focus and concentrated at the city centre (as shown on the side overall node). The separation of residential, commercial, and industrial areas leads to different consequences such as the lack of amenities for some residential areas, permeability issues, the interface between each different zone creates a dull and inviting space that is considered usually a fear area for people specially at night. Scattered cultural attractions create a nodes that are lively at day and large black fear zones at night, this affects the safety of locals living in such areas.

Many vacant lands and parking lots scattered along river edge create a great potential for future developments along river, yet in their current condition considered a liability. Any future development that will take place along the river should be a mixed use one in order to rejuvenate the Clyde and enhance the urban fabric.

CRIME MAP



KEY

HIGHEST CRIME RATES

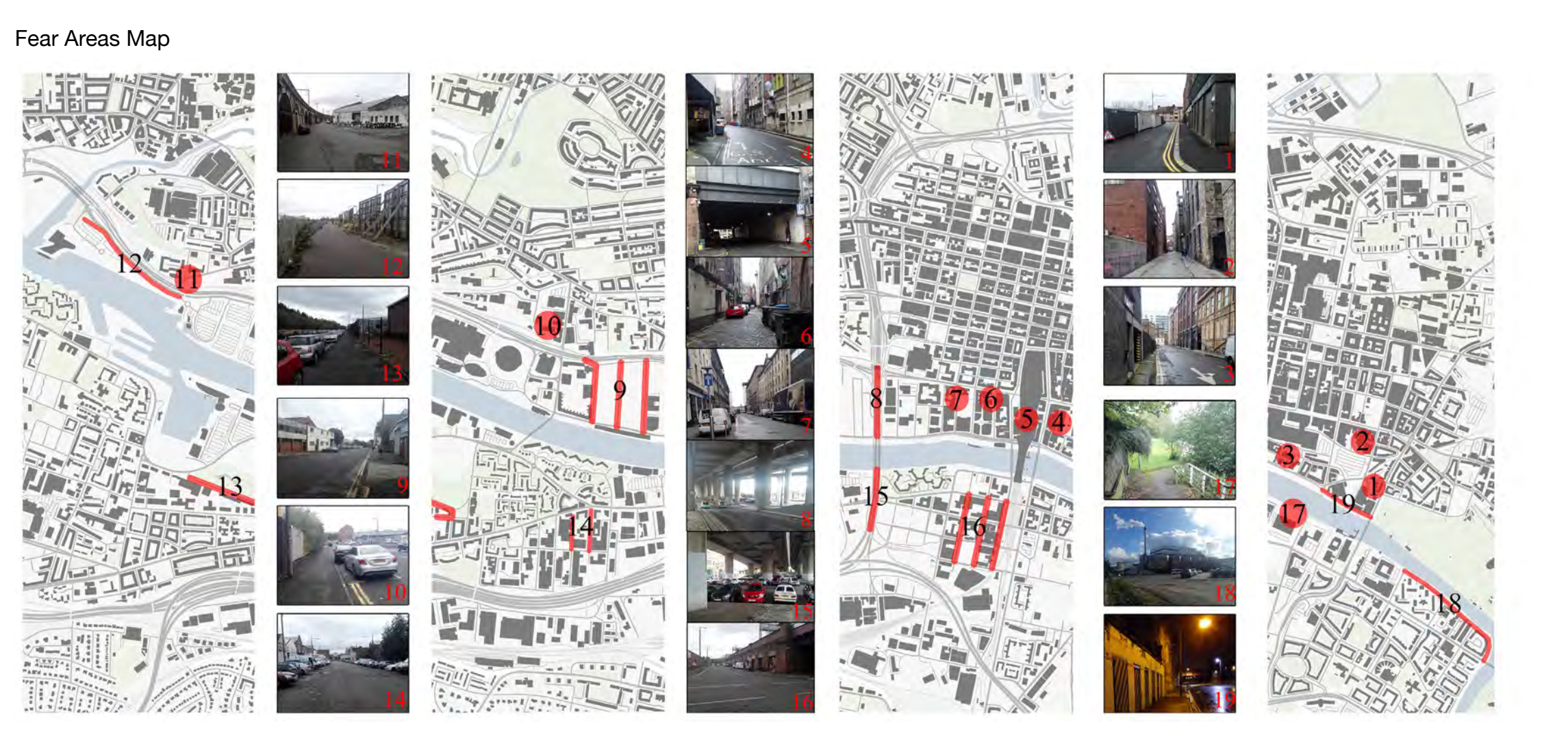
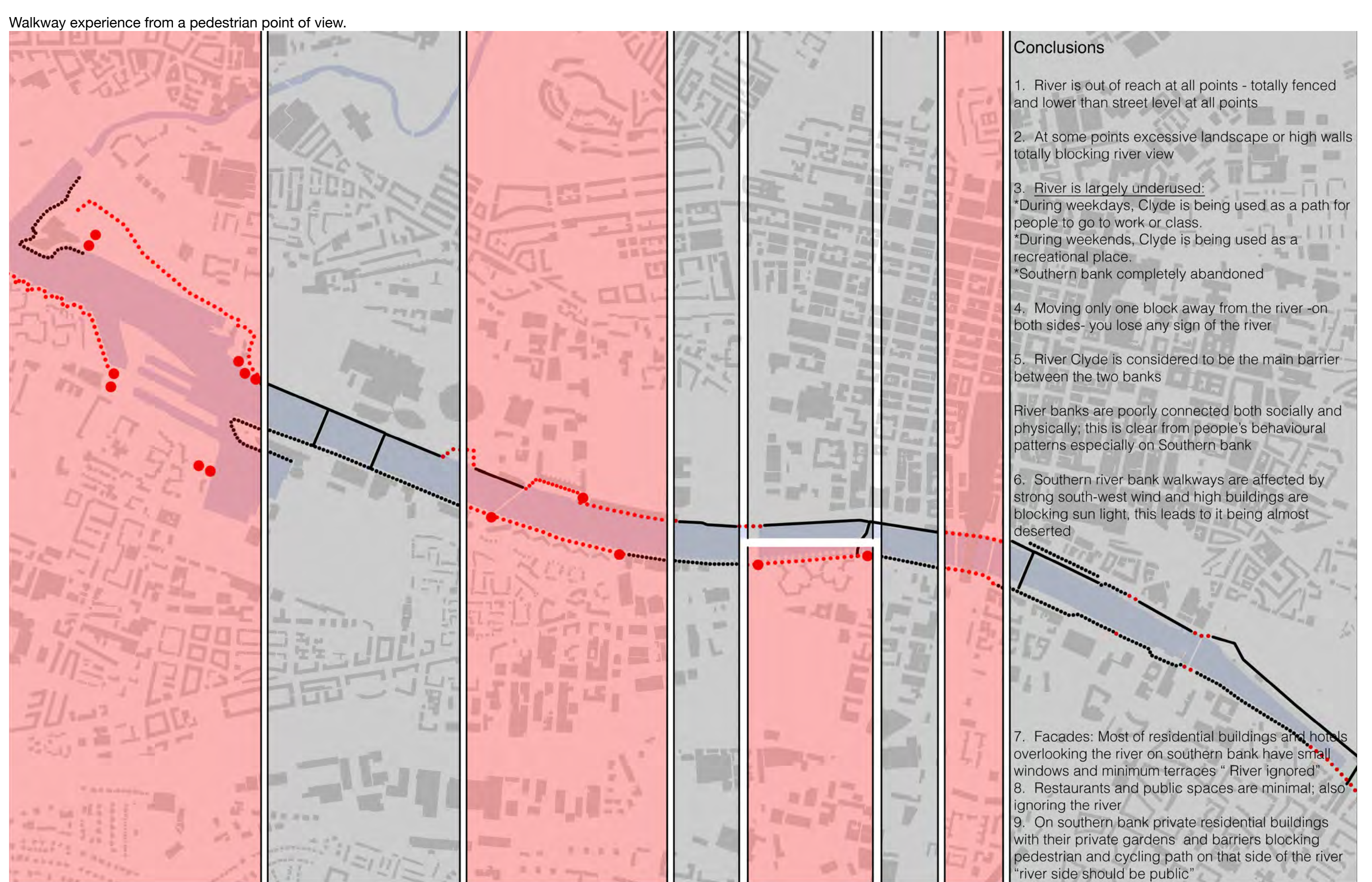
LOWEST CRIME RATES

CITIZEN'S FEAR ZONE

Surveyed 15 people both males and females, age ranging between 18-80 years old.

We asked them to point out specific areas or places where they feel unsafe or would think twice about venturing into, and why?

BARRIER MAP

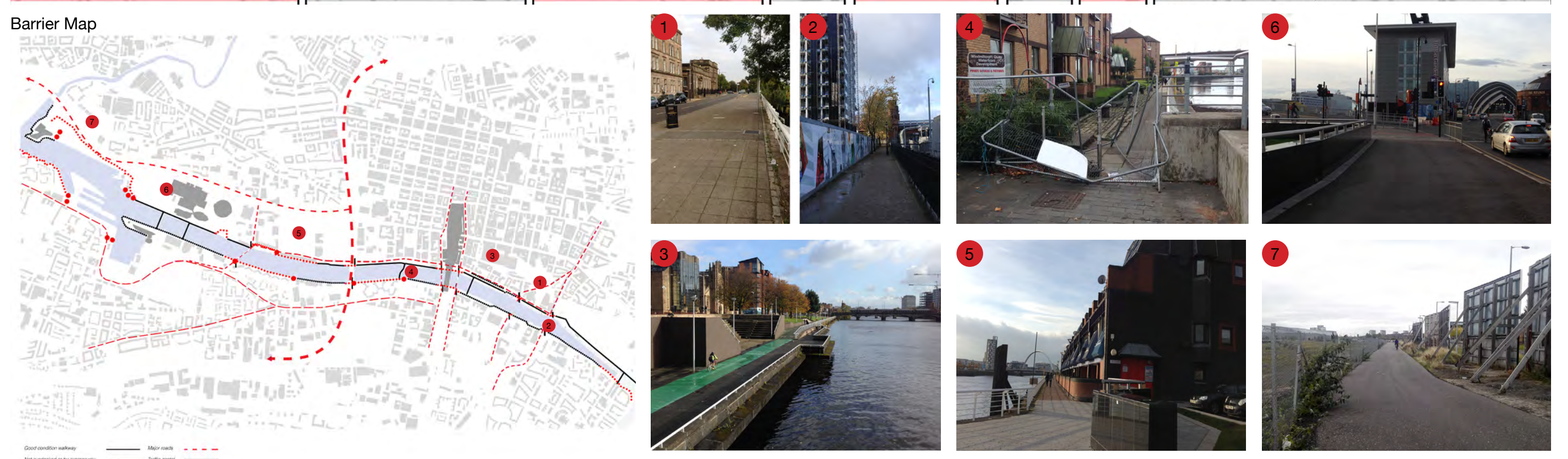


After people pointed their perceived fear areas, we pointed out specific areas that raised concern and took pictures.

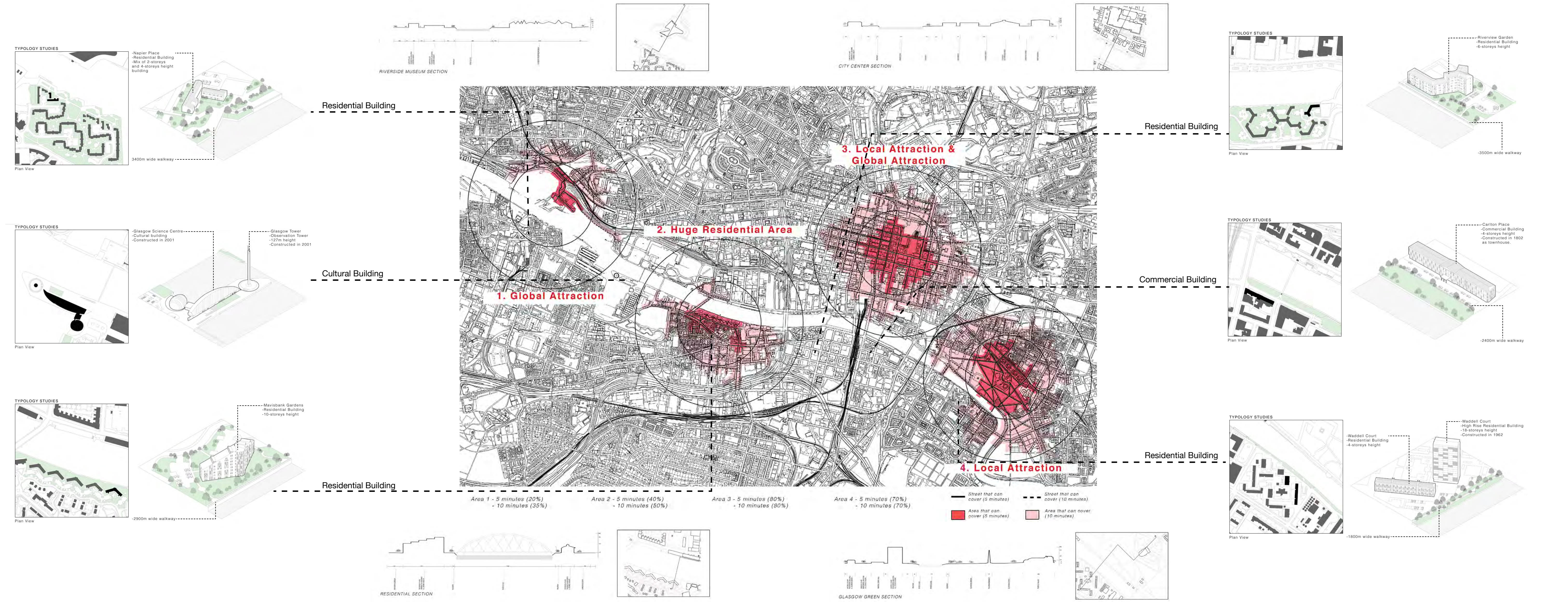
Most of the fear areas along the river are poorly lit streets and areas with few residential developments. This creates a dark vacant spots at night which make them fear zones. Also since the urban fabric tend to be mono-functional, edges between each functions form a dark barrier at night forming existing danger areas that people would normally avoid.

Although city centre scores the highest in crime rates, it is not considered to be dangerous by most people since it was considered as busy areas which usually much safe in contrast to vacant areas.

In conclusion one will find inconsistencies between areas that people consider as fear zones and areas with actual high crime rate.



PEDSHED STUDY



CULTURE MAP

